



BEAU BOX  
REAL ESTATE

# 6700 Jefferson Office Park

6700 Jefferson Hwy., Baton Rouge, LA

---

Mathew J. Laborde, CCIM  
337.326.1368 | [mlaborde@beaubox.com](mailto:mlaborde@beaubox.com)

[www.beaubox.com](http://www.beaubox.com)





# Professional Office Space for Sale or Lease

## 6700 Jefferson Hwy., Baton Rouge, LA

Overview

Aerial

Location

Site Plan I

Site Plan II

Elevations I

Elevations II



Planned office park condominium development on Jefferson Highway adjacent to Live Oak Arabian horse farm

Located just west of Whole Foods and the entire Towne Center live-work-play development

Owner will build to suit for sale or lease

Contact listing agent for pricing

**Mathew J. Laborde, CCIM**  
337.326.1368 | [mlaborde@beaubox.com](mailto:mlaborde@beaubox.com)

Broker of Record, Beau J. Box; Licensed by the Louisiana Real Estate Commission, Mississippi Real Estate Commission, and Alabama Real Estate Commission, USA. This information has been secured from sources we believe to be reliable, but we make no representations or warranties, expressed or implied, as to the accuracy of the information. References to square footage or age are approximate. Buyer must verify the information and bears all risk for any inaccuracies.

© Beau Box Commercial Real Estate. 8/2/2014

[www.beaubox.com](http://www.beaubox.com)



# Professional Office Space for Sale or Lease

## 6700 Jefferson Hwy., Baton Rouge, LA

Overview

Aerial

Location

Site Plan I

Site Plan II

Elevations I

Elevations II



**Mathew J. Laborde, CCIM**  
337.326.1368 | [mlaborde@beaubox.com](mailto:mlaborde@beaubox.com)

Broker of Record, Beau J. Box; Licensed by the Louisiana Real Estate Commission, Mississippi Real Estate Commission, and Alabama Real Estate Commission, USA. This information has been secured from sources we believe to be reliable, but we make no representations or warranties, expressed or implied, as to the accuracy of the information. References to square footage or age are approximate. Buyer must verify the information and bears all risk for any inaccuracies.

© Beau Box Commercial Real Estate. 8/2/2014

[www.beaubox.com](http://www.beaubox.com)



# Professional Office Space for Sale or Lease

## 6700 Jefferson Hwy., Baton Rouge, LA

Overview

Aerial

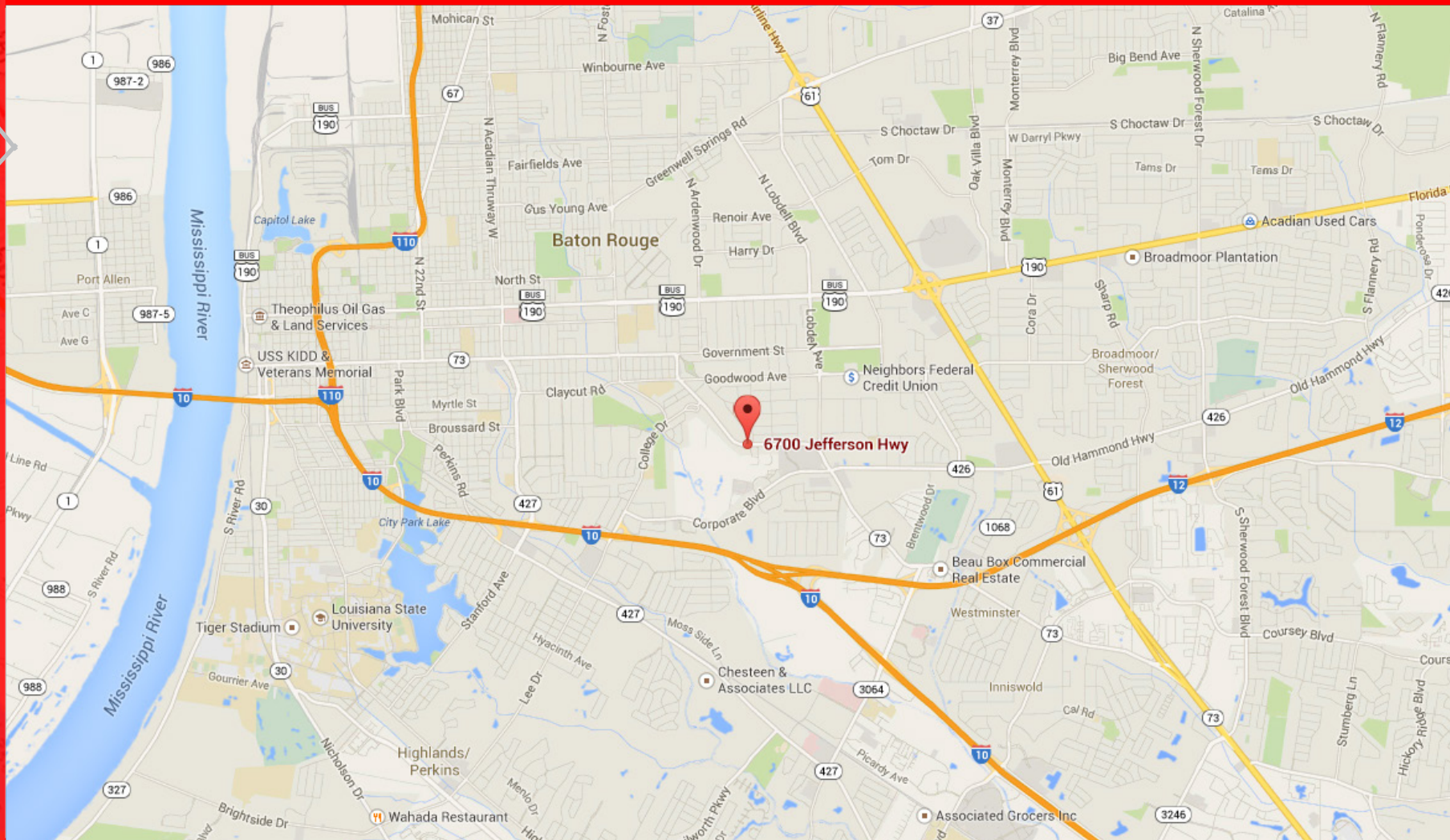
Location

Site Plan I

Site Plan II

Elevations I

Elevations II



**Mathew J. Laborde, CCIM**  
337.326.1368 | [mlaborde@beaubox.com](mailto:mlaborde@beaubox.com)

Broker of Record, Beau J. Box; Licensed by the Louisiana Real Estate Commission, Mississippi Real Estate Commission, and Alabama Real Estate Commission, USA. This information has been secured from sources we believe to be reliable, but we make no representations or warranties, expressed or implied, as to the accuracy of the information. References to square footage or age are approximate. Buyer must verify the information and bears all risk for any inaccuracies.

© Beau Box Commercial Real Estate. 8/2/2014

[www.beaubox.com](http://www.beaubox.com)



# Professional Office Space for Sale or Lease

## 6700 Jefferson Hwy., Baton Rouge, LA

Overview

Aerial

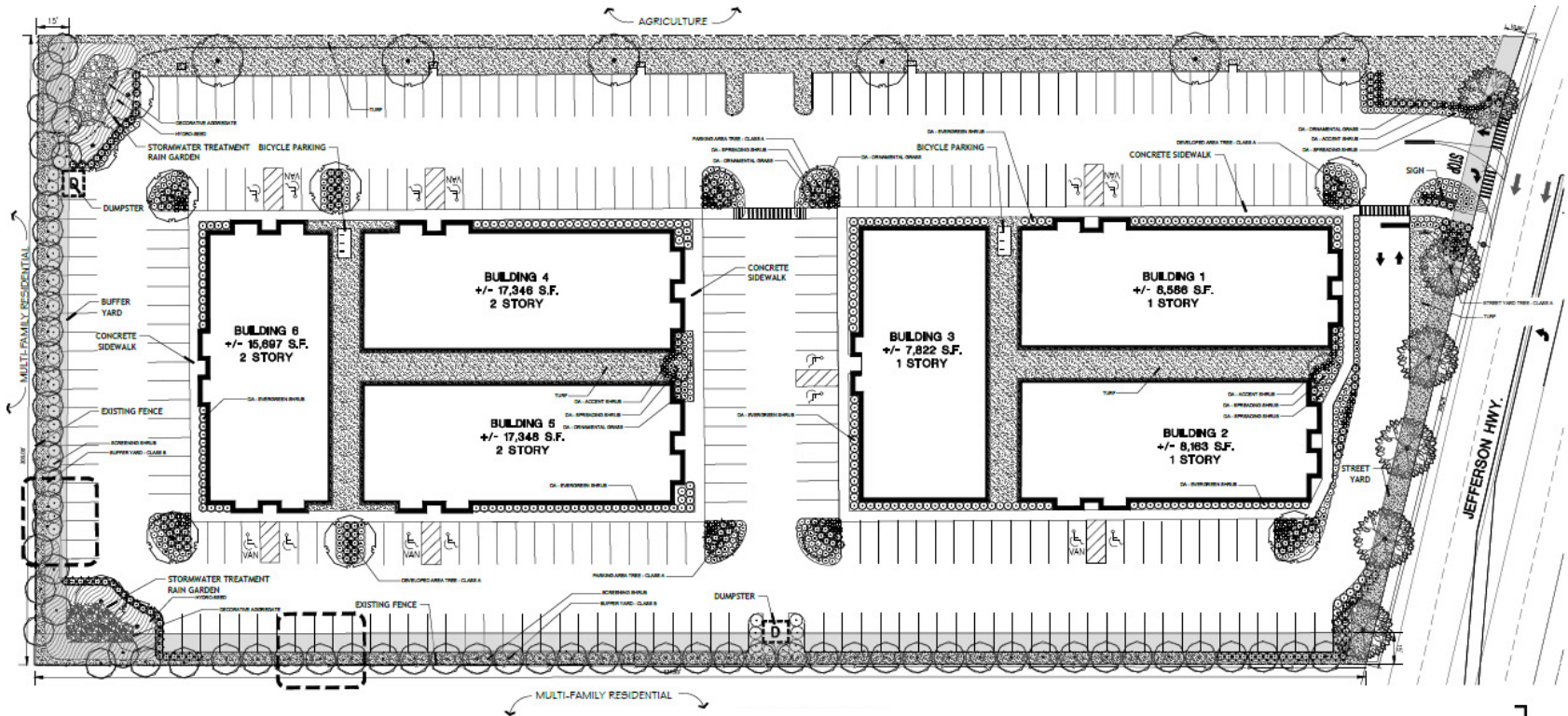
Location

Site Plan I

Site Plan II

Elevations I

Elevations II



**Mathew J. Laborde, CCIM**  
337.326.1368 | [mlaborde@beaubox.com](mailto:mlaborde@beaubox.com)

Broker of Record, Beau J. Box; Licensed by the Louisiana Real Estate Commission, Mississippi Real Estate Commission, and Alabama Real Estate Commission, USA. This information has been secured from sources we believe to be reliable, but we make no representations or warranties, expressed or implied, as to the accuracy of the information. References to square footage or age are approximate. Buyer must verify the information and bears all risk for any inaccuracies.

© Beau Box Commercial Real Estate. 8/2/2014

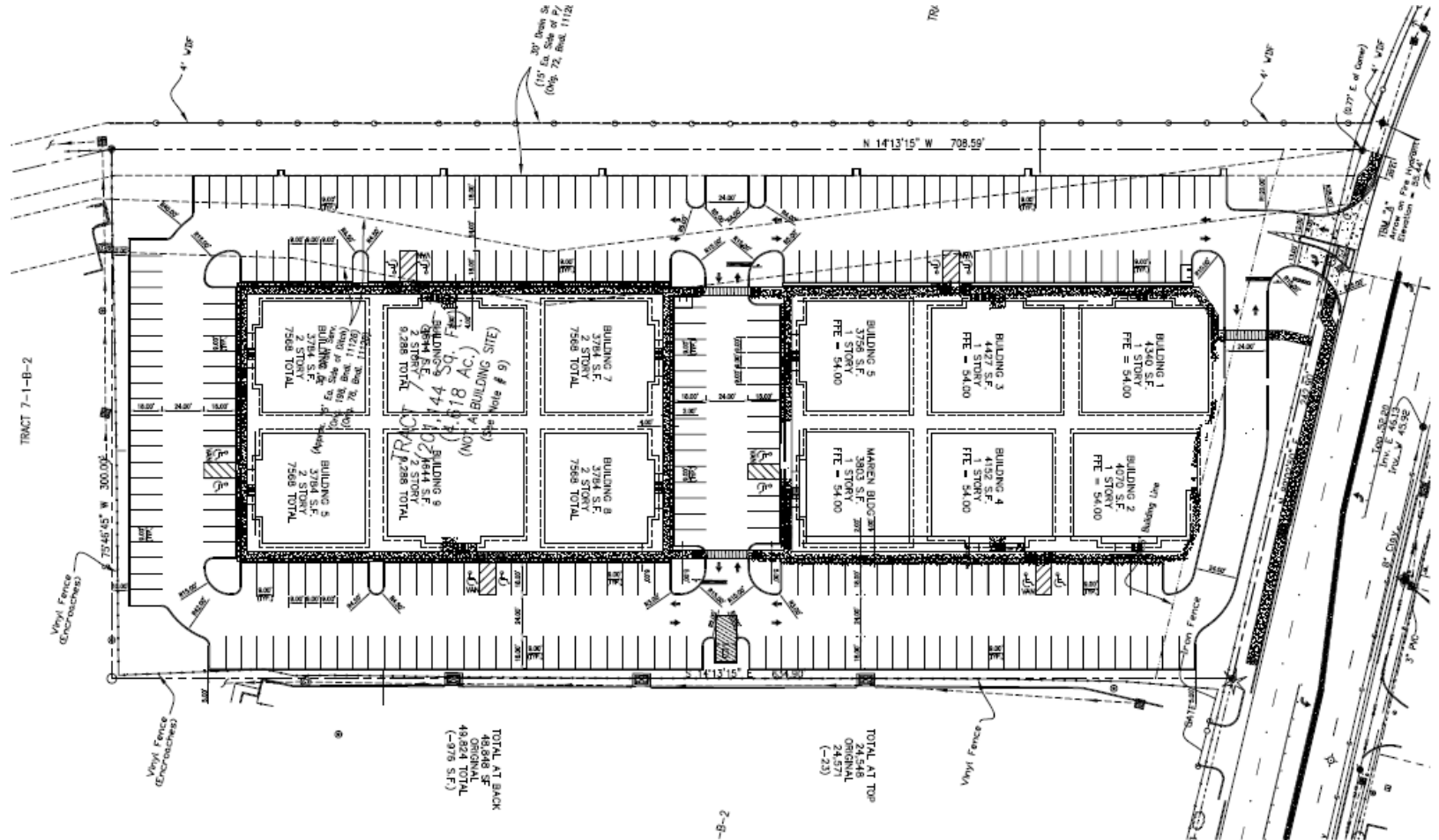
[www.beaubox.com](http://www.beaubox.com)



# Professional Office Space for Sale or Lease

## 6700 Jefferson Hwy., Baton Rouge, LA

- Overview
- Aerial
- Location
- Site Plan I
- Site Plan II
- Elevations I
- Elevations II



**Mathew J. Laborde, CCIM**  
337.326.1368 | [mlaborde@beaubox.com](mailto:mlaborde@beaubox.com)

Broker of Record, Beau J. Box; Licensed by the Louisiana Real Estate Commission, Mississippi Real Estate Commission, and Alabama Real Estate Commission, USA. This information has been secured from sources we believe to be reliable, but we make no representations or warranties, expressed or implied, as to the accuracy of the information. References to square footage or age are approximate. Buyer must verify the information and bears all risk for any inaccuracies.

© Beau Box Commercial Real Estate. 8/2/2014

[www.beaubox.com](http://www.beaubox.com)



# Professional Office Space for Sale or Lease

6700 Jefferson Hwy., Baton Rouge, LA

Overview

Aerial

Location

Site Plan I

Site Plan II

Elevations I

Elevations II



**Mathew J. Laborde, CCIM**  
337.326.1368 | [mlaborde@beaubox.com](mailto:mlaborde@beaubox.com)

Broker of Record, Beau J. Box; Licensed by the Louisiana Real Estate Commission, Mississippi Real Estate Commission, and Alabama Real Estate Commission, USA. This information has been secured from sources we believe to be reliable, but we make no representations or warranties, expressed or implied, as to the accuracy of the information. References to square footage or age are approximate. Buyer must verify the information and bears all risk for any inaccuracies.

© Beau Box Commercial Real Estate. 8/2/2014

[www.beaubox.com](http://www.beaubox.com)



# Professional Office Space for Sale or Lease

## 6700 Jefferson Hwy., Baton Rouge, LA

Overview

Aerial

Location

Site Plan I

Site Plan II

Elevations I

Elevations II



Mathew J. Laborde, CCIM  
337.326.1368 | [mlaborde@beaubox.com](mailto:mlaborde@beaubox.com)

Broker of Record, Beau J. Box; Licensed by the Louisiana Real Estate Commission, Mississippi Real Estate Commission, and Alabama Real Estate Commission, USA. This information has been secured from sources we believe to be reliable, but we make no representations or warranties, expressed or implied, as to the accuracy of the information. References to square footage or age are approximate. Buyer must verify the information and bears all risk for any inaccuracies.

© Beau Box Commercial Real Estate. 8/2/2014

[www.beaubox.com](http://www.beaubox.com)